



E-ISSN: 2320-7078

P-ISSN: 2349-6800

[www.entomoljournal.com](http://www.entomoljournal.com)

JEZS 2020; 8(4): 1650-1656

© 2020 JEZS

Received: 19-05-2020

Accepted: 21-06-2020

**Ladslaus L Mnyone**

Pest Management Centre,  
Sokoine University of  
Agriculture, P.O. Box 3110,  
Chuo Kikuu, Morogoro,  
Tanzania

**Joseph Aikambe**

Department of Microbiology,  
Parasitology and Biotechnology,  
College of Veterinary Medicine  
and Biomedical Sciences, Sokoine  
University of Agriculture, P.O.  
Box 3019, Chuo Kikuu,  
Morogoro, Tanzania

## Composition and abundance of malaria vectors and demographic risk factors in a high endemic area of rural eastern Tanzania

**Ladslaus L Mnyone and Joseph Aikambe**

### Abstract

We assessed composition, abundance and behaviour of malaria vectors, and demographic risk factors in eastern Tanzania. Mosquitoes were collected from 10 households per ward and 10 outdoor points using CDC light traps. Assessment of demographic factors was done in 100 households per ward through interviews and direct observation. Total of 1238 anophelines were collected: *An. gambiae* s.l. (95.48%) and *An. funestus* s.l. (4.52%). Abundance of *An. gambiae* s.l. was 3-fold higher during wet season. Abundance of *An. funestus* s.l. was higher during dry than wet season. Abundance of *An. gambiae* s.l. was 20-fold higher than *An. funestus* s.l. during wet season. Mean abundance per house was 4.35 for *An. gambiae* s.l. and 0.04 for *An. funestus* s.l. in Kiroka, and 1.18 for *An. gambiae* s.l. and 0.92 for *An. funestus* s.l. in Mkuyuni. >95% of households had open-eaves. >76% of households were cooking outdoors. Only 50% of study households owned bednets. Conclusively, vector population in the study area composed of *An. gambiae* s.l followed by *An. funestus* s.l., and abundance was higher indoors during wet than dry season. These along with risk factors like large proportion of open-eaves, low-bednet coverage and outdoor activities suggest high transmission risk in the study-area.

**Keywords:** Malaria vectors composition, abundance, Kiroka, Mkuyuni

### Introduction

Mosquitoes transmit several infectious diseases, which greatly affect the health and socio-economic development of many countries worldwide, particularly in sub-Saharan Africa. These diseases include among other malaria, lymphatic filariasis, dengue and Rift Valley fever. Malaria causes the highest number of cases and deaths [1]. Malaria caused 228 million cases and 405 thousand deaths worldwide in 2019 [1]. African countries accounted for 93% and 94% of the cases and deaths respectively [1]. These figures are lower by more than 50% to what was experienced over the last decade consequent to improved use and coverage of long-lasting insecticidal nets (LLINs), indoor residual spraying (IRS), diagnostics and treatment. However, they are still intolerably high, and thus continued control efforts are needed to reduce malaria burden and achieve elimination.

Tanzania is equally experiencing a high malaria burden, and the population at risk has been increasing over the years. Over 95% of its population is living in areas with high malaria transmission risk [2]. Malaria causes approximately 7.7 million cases [2, 3] and accounts for 33.4–42.1% of all hospital admissions in the country annually [4, 5]. Under-five children and pregnant women suffer the greatest burden. However, in Tanzania and elsewhere the burden is increasingly shifting to older age categories [6-9]. Like in other endemic areas, primary disease vectors include *Anopheles gambiae* s.s, *Anopheles arabiensis* and *Anopheles funestus* [10, 11, 12]. Within the last 10-15 years, there has been a shift in the composition of these vectors across the country, mainly from *An. gambiae* s.s to *An. arabiensis*. *An. arabiensis* is becoming the dominant malaria vector in sub-Saharan Africa [13-15]. The population and contribution of *An. funestus* in malaria transmission has also increased [16-18]. Notably, *An. funestus* is contributing to >85% of the ongoing malaria transmission events in south-eastern Tanzania despite their lower densities compared to *An. arabiensis* [18]. Moreover, the population of secondary and/or tertiary malaria vectors is increasing in Tanzania and elsewhere in SSA [19-21]. However, the contribution of these vectors in malaria transmission in the country remains speculative. Despite the significant reduction of malaria in the country including eastern Tanzania, foci of high endemicity are purported to remain. This is because malaria is characterized by temporal variability that bestows evolving and new challenges for control strategies [22].

**Corresponding Author:****Ladslaus L Mnyone**

Pest Management Centre,  
Sokoine University of  
Agriculture, P.O. Box 3110,  
Chuo Kikuu, Morogoro,  
Tanzania

The variability is driven by several factors including the composition, behaviour, and density of mosquito vectors species and/or groups. The same species of mosquitoes in different geographical areas may vary concerning their behaviour, composition, and density [23]. The density of malaria vectors varies among areas within small proximity [22, 24-26]. These go hand in hand with variability in terms of other environmental malaria transmission risk factors such as house types and mosquito entry points, the proximity of settlements to crop fields, livestock keeping, and bed net use. As such, well-targeted efforts that embrace area-specific situations, at least in the remaining high malaria intensity foci, are needed to preserve health gains achieved so far and achieve elimination. Therefore, it is compelling to have up-to-date information on the composition and density of malaria vectors to guide the implementation of appropriate vector surveillance and control strategies [27]. Retrospective analysis of malaria cases in eastern Tanzania revealed two potentially high malaria endemic wards, Mkuyuni, and Kiroka, with a prevalence of up to 61% [28]. However, no studies have been conducted to obtain up-to-date information on malaria vector composition, abundance, and behaviour, and demographic/household risk factors. Therefore this study was conducted with an objective to update the malaria vector composition, seasonal abundance, and behaviour, and assess demographic/household transmission risk factors across the wards.

## Materials and methods

### Study area

The study was conducted in Mkuyuni (latitude 6.57° south and longitude 37.48° east) and Kiroka (latitude 6.83° south and longitude 37.78° east) (Figure 1). These wards are next to each other and are part of Morogoro Rural District, eastern Tanzania. Mkuyuni covers 97.4km<sup>2</sup> with a population of 17,935 people [29]. Kiroka covers 212km<sup>2</sup> with a population of 21,853 people [29]. Agriculture is the major economic activity across the two wards; and the main crops are rice, maize, banana, and coconuts. The long rain season runs from March to August and the short season runs from September to mid-December. The dry season runs from January to end of February.

### Study design

This was a repeated cross-sectional entomological survey conducted during the wet and dry season. The survey was done over two months each season, once every month, for five consecutive nights. The survey involved 10 households and outdoor points per ward. The households were selected using a simple random sampling technique. The assessment of potential malaria transmission risk factors was done in 200, 100 households per ward. These households were also selected using a simple random sampling technique across the same villages where the entomological survey was conducted. The assessment was done before the entomological surveys and was done through interviews and direct observations.

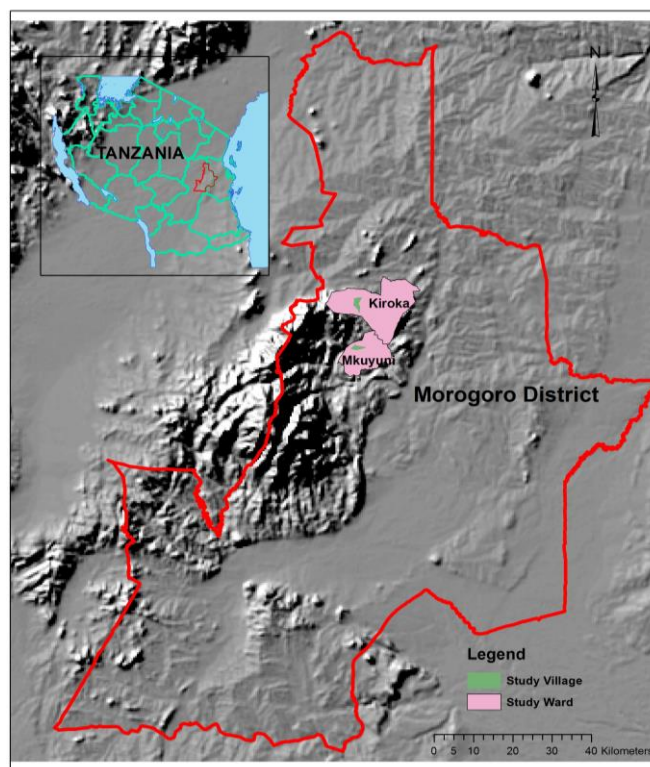
### Mosquito sampling and identification

Mosquitoes were collected using standard Centre for Disease Control and Prevention light traps (CDC, Atlanta, GA, USA). Mosquito collections were done in 20 households (10 households per) between 1800 and 0600 hrs for 10 nights each season. As such, each ward had a total of 100-night catches per season. One light trap was hung, 30 cm high, at

the foot-end of a person sleeping under LLIN; and a second trap was positioned outdoors, 30 cm high and 5 m away from the household. Due to unavoidable circumstances, outdoor collection was only done in Kiroka. The traps were removed in the morning, all cups placed in the cool box and transported to Pest Management Centre for processing and identification. The mosquitoes were identified using taxonomic keys [30] at our laboratory and double-checked by another expert (Mr J. Myamba) with over 30 years experience in mosquito identification, from the National Institute for Medical Research (NIMR), Muheza branch, northern Tanzania.

### Assessment of demographic/household transmission risk factors

The potential risk factors assessed included mosquito entry points on different parts of the house, agricultural activities (cultivated crops, the proximity of crop fields to settlements), night outdoor activities (cooking), ownership of bed nets and livestock keeping (the type of animals, number and where they were kept during the night). The household head or anybody older than 18 years was interviewed after verbal consent.



**Fig 1:** Map of the study area, Morogoro Rural District, Eastern Tanzania.

### Statistical analysis

All data were double entered into an Excel spreadsheet and cleaned before they were analyzed in R Statistical Software (version 3.6.2). The analysis was only done for malaria vectors, and comparison of mosquito abundance was done across species, season and trap location using Generalized Linear Mixed Model (GLMM). Negative binomial GLMM or quasi-Poisson GLMM was employed dispersed mosquito data. Poisson GLMM was used in undispersed data.

## Results and Discussion

### Composition and abundance of malaria vectors

A total of 1238 adult anophelines were collected throughout

the study period and 67% (n=825) were caught during the wet season and 33% (n=413) during the dry season. These mosquito vectors were composed of *An. gambiae* s.l. (95.48%; n=1182) and *An. funestus* s.l. (4.52%; n=56; Table 1). The abundance of *An. gambiae* s.l. was 3-fold higher during the wet season than the dry season ( $P < 0.001$ ; Figure 2&3). Contrary, the abundance of *An. funestus* s.l. was significantly higher during the dry season than the wet season ( $P < 0.001$ ). *Anopheles gambiae* s.l. was over 20-fold more abundant than *An. funestus* s.l. (Figure 2). Furthermore, the abundance of mosquitoes indoors was slightly higher than the abundance of mosquitoes outdoors irrespective of the season in Kiroka ( $P < 0.001$ ; Figure 2). The mean abundance per house in Mkuyuni was 1.18 and 0.92 for *An. gambiae* s.l. and *An. funestus* s.l. respectively. The mean abundance per house in Kiroka was 4.35 and 0.04 for *An. gambiae* s.l. and *An. funestus* s.l. respectively (Figure 2&3). Despite the variation in abundance, both anopheline mosquito groups were prevalent across the study wards. The mean abundance of *An. gambiae* s.l. and *An. funestus* s.l. per house was 1.2 and 0.6 times higher in Mkuyuni than Kiroka ( $P < 0.001$ ).

These findings will guide many fundamental aspects for subsequent research notably identification of the next set of questions requiring an immediate attention, study designs and data collection tools. Detailed knowledge of area-specific factors associated with increased risk and burden of malaria is emphasized to specifically tailor and improve interventions targeted particularly against residual malaria [31, 32]. Interestingly, several studies conducted over the past one decade embraced this concept by employing cluster analysis to identify Spatio-temporal malaria transmission hotspots in many parts of Africa [33-36].

The composition of malaria vector population in the study area is consistent with the vector population in Tanzania and elsewhere in the African region [1, 18, 22]. Furthermore, the observed malaria vectors composition was consistent across study sites and the season of the year. The high density of *An. gambiae* s.l. arguably implies that species of this complex may be dominating malaria transmission in the study area. However, to re-affirm this, predominant species within each complex, *An. gambiae* s.l. and *An. funestus* s.l., will need to be identified and their relative entomological inoculation rates (EIR) assessed. Depending on transmission efficiency and biting behaviour, certain malaria vector species may dominate transmission despite their low densities. For example, in several parts of Tanzania and elsewhere in the region where *An. funestus* s.l. has somehow increased, the species is dominating malaria transmission despite their density being generally lower than that of *An. arabiensis* [19]. The *An. funestus* s.l. and *An. gambiae* s.l. (in the same group as *An.*

*arabiensis*) are more efficient in transmitting malaria parasites compared to *An. arabiensis* and other zoophilic species [37, 38], mainly due to high anthropophilic [39-44] as well as indoor feeding and resting [38, 40, 43]. *An. arabiensis* is often seen as a less efficient vector because of its higher plasticity in blood meal hosts [45].

The comparability of current study areas with other endemic areas in terms of malaria vectors composition and abundance does not always imply comparability in disease transmission intensity. This can be explained by several factors, the most important of which is the intra-species variation across geographical and/or ecological zones. For example sub-populations of anthropophilic and endophagic *An. arabiensis*, known to largely zoophilic and exophilic, have been reported certain parts of Ethiopia and Cameroon [46-50]. Besides, the transmission capacity of similar vectors varies with and/or are influenced by ecological, environmental, demographic (for example mobility and coverage of control interventions) and host factors [51-55]. The sub-populations of early and outdoor feeding *An. gambiae* s.l., largely known to be anthropophilic, are increasingly reported across Africa arguably as a result of the wide coverage of long-lasting insecticidal nets (LLINs) and other indoor based vector control interventions [56-60].

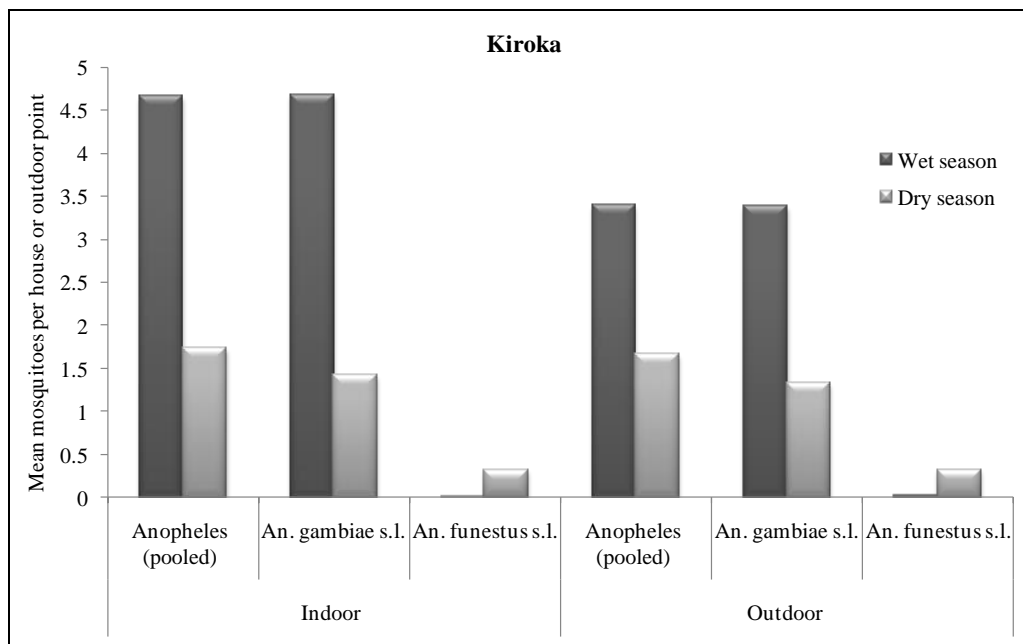
Although the two aforesaid siblings of *An. gambiae* (s.l.) could be composing the vector population in Mkuyuni and Kiroka, both of them are presumably anthropophilic, thus contributing to high malaria prevalence recorded in these areas almost throughout the year [28]. Or else, the relative contribution of *An. funestus* on malaria transmission could be higher than anticipated.

Moreover, the abundance of *An. funestus* was similar during the wet and dry season. *An. funestus* abounds during the dry season and is less rain-dependent than *An. gambiae* s.l., owing to the tendency to breed in permanent or semi-permanent swamps or pools. Because of such characteristics, it is considered as a vector that bridges malaria transmission across the dry season [61]. The current study areas have multiple semi-permanent and permanent breeding sites especially around the interface of low-terrain and hills. This implies a considerably high malaria transmission risk all year round. Our recent retrospective study revealed high malaria prevalence all year round with the peak during the wet season, April and July. This could be attributed by the fact that rice fields, one of the most favourable and large mosquito breeding environments, are exclusively rain-fed and are therefore cultivated during long rains running from March to July. This is consistent with most if not all other studies associating long rains and rice cultivation with high disease prevalence.

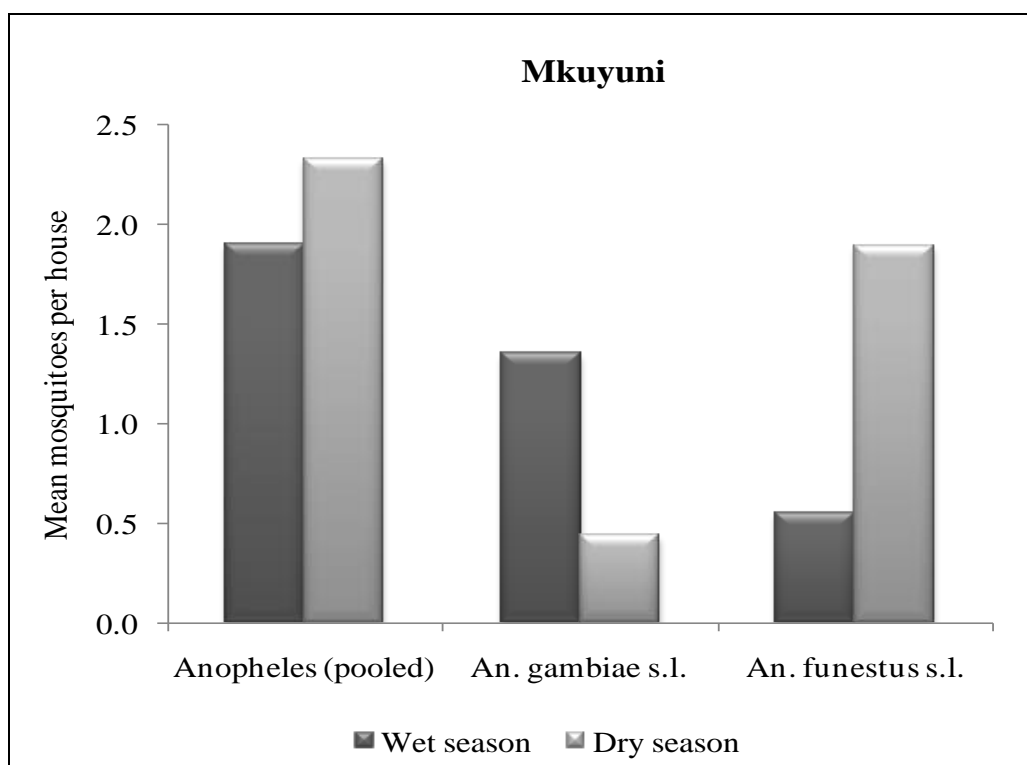
**Table 1:** Number of mosquitoes caught during the wet and dry season in Mkuyuni and Kiroka

Ward	Season	No. of <i>An. gambiae</i> s.l.		No. of <i>An. funestus</i> s.l.	
		Indoor	Outdoor	Indoor	Outdoor
Mkuyuni	Wet	27*	NT	11	NT
	Dry	8	NT	34*	NT
Kiroka	Wet	786*	330	1	3
	Dry	27*	4	6*	1
Total		848	334	52	4

NT= No trapping was done outdoors; \*significance  $< 0.001$



**Fig 2:** Mean caught numbers of mosquitoes per house during the wet and dry season in Kiroka. Indoor and outdoor catches are presented separately.



**Fig 3:** Mean caught numbers of mosquitoes per house during the wet and dry season in Mkuyuni. Only indoor catches are presented.

#### Demographic/household transmission risk factors

Overall, 100% (n=100) of and 68% (n=34) of the study houses in Mkuyuni and Kiroka respectively had open eaves. More than 95% of the houses in Mkuyuni and Kiroka had multiple openings on walls, windows and doors. About 98% of the respondents in either ward cultivate either or both maize and rice. Both crops are exclusively rain-fed and therefore are cultivated during the long rains between March and July. About 68% (n=34) in Mkuyuni and 24% (n=12) in Kiroka had some of their maize/rice fields within 1 km from their houses. About 76% (n=76) of the respondents in Mkuyuni and 83% (n=83) of the respondents in Kiroka were cooking outside during the night. About 50% of the study

households owned bed nets, and the majority (up to 90%) of those had an only one-bed net. Most of the people in either ward were keeping poultry particularly chicken and more than 98% were keeping them inside their houses. The next most common livestock in the area were goats (7%; n=14). Studies have reported disproportionately high proportions of mosquitoes inside houses with open eaves and other alternative openings [62-65]. Assessment of the demographics revealed several risk features which are suggestive high risk of exposure to malaria and other mosquito vectors. More than 95% of the study households had multiple openings on the walls, doors and windows, and up to 100% had open eaves. The high rate of outdoor cooking indicates increasing



exposure to mosquito bites and malaria transmission risk [66]. Considering that each household had an average of 3 people, let alone the likelihood that only a few of the bednets were being used regularly and appropriately, most of the study households were at high risk of malaria. Studies have repeatedly reported underutilization of bed nets even in areas with high coverage [67, 68].

### Conclusions

This study provides preliminary but equally important, information on malaria vectors composition, seasonal abundance and risk factors in a potentially high endemic area of eastern Tanzania. Malaria vector population in the study areas was mainly composed of *An. gambiae* s.l followed by *An. funestus* s.l., and their abundance is significantly higher indoors particularly during wet season. These along with risk factors like a large number of houses with open eaves and other forms of mosquito entry points, proximity to rice fields, low coverage of bednets and night-time outdoor activities suggest high disease transmission risk in the study area. The findings warrant further research to determine the contribution documented risk factors on malaria burden.

### Conflict of interest

The authors declare that they have no competing interests.

### Acknowledgement

We extend our sincere thanks to study communities for their cooperation and Mr Myamba J, a retiree at the National Institute for Medical Research (NIMR), Muheza, Tanzania, for his technical assistance in mosquito identification.

### References

1. WHO. World malaria report 2018. Geneva: WHO, 2019.
2. WHO. Haemoglobin concentrations for the diagnosis of anaemia and assessment of severity. Vitamin and mineral nutrition information system. Geneva: WHO. 2011.
3. TDHS-MIS. Tanzania Demographic and Health Survey and the Malaria Indicator Survey. Dar es Salaam, Tanzania and Rockville, Maryland, USA; 2016,
4. WHO. World malaria report 2016. Geneva: WHO. 2017.
5. Mboera LEG, Rumisha SF, Lyimo EP, Chiduo MG, Mangu CD, Mremi IR, Kumalija CJ, Joachim C, Kishamawe C, Massawe IS, Matamba LE, Kimario E, Bwana VM, Mkwashapi DM. Cause-specific mortality patterns among hospital deaths in Tanzania, 2006 – 2015. PLoS ONE 2018; 13:e0205833.
6. Schellenberg D, Menendez C, Aponte J, Guinovart C, Mshinda H, Tanner M, *et al.* The changing epidemiology of malaria in Ifakara Town, southern Tanzania. Tropical Medicine and International Health. 2004; 9:68-76.
7. Reyburn H, Mbatia R, Drakeley C, Bruce J, Carneiro I, Olomi R *et al.* Association of transmission intensity and age with clinical manifestations and case fatality of severe *Plasmodium falciparum* malaria. JAMA. 2005; 293:1461-70.
8. Chimbari MJ. Trans-boundary diagnostic assessment. Maun: Okavango Research Institute, University of Botswana; 2009.
9. Gunda R, Chimbari MJ, Shamu S, Sartorius B, Mukaratirwa S. Malaria incidence trends and their association with climatic variables in Rural Gwanda, Zimbabwe, 2005–2015. Malaria Journal. 2017; 16:393.
10. Kweka EJ, Kimaro EE, Kimaro EG, Nagagi YP, Malele II. Major Disease Vectors in Tanzania: Distribution, Control and Challenges: In Biological Control of Pest and Vector Insect. Intech, 2017.
11. Kabula B, Derua YA, Tungu P, Massue DJ, Sambu E, Stanley G *et al.* Malaria entomological profile in Tanzania from 1950 to 2010: A review of mosquito distribution, vectorial capacity and insecticide resistance. TJHR. 2011, 13.
12. Okumu FO, Kihonda J, Mathenge E, Kotas ME, Moore SJ, Killeen GF. Comparative evaluation of methods used for sampling malaria vectors in the Kilombero Valley, South Eastern Tanzania. Open Tropical Medicine Journal. 2008; 1:51-55.
13. Russell TL, Govella NJ, Azizi S, Drakeley CJ, Kachur SP, Killeen GF. Increased proportions of outdoor feeding among residual malaria vector populations following increased use of insecticide-treated nets in rural Tanzania. Malaria Journal. 2011; 10:80.
14. Bayoh MN, Mathias DK, Odiere MR, Mutuku FM, Kamau L, Gimnig JE *et al.* *Anopheles gambiae*: historical population decline associated with regional distribution of insecticide-treated bed nets in western Nyanza Province, Kenya. Malaria Journal 2010; 9:62.
15. Akpan GE, Adepoju KA, Oladosu OR, Adelabu SA. Dominant malaria vector species in Nigeria: Modelling potential distribution of *Anopheles gambiae* sensu lato and its siblings with MaxEnt. PLoS ONE. 2018, 13.
16. Mboera L, Bwana VM, Rumisha SF, Stanley G, Tungu PK, Malima Spatial abundance and human biting rate of *Anopheles arabiensis* and *Anopheles funestus* in savannah and rice agroecosystems of Central Tanzania. Geospatial Health. 2015; 10:322.
17. Lwetoijera DW, Harris C, Kiware SS, Dongus S, Devine GJ, McCall PJ *et al.* Increasing role of *Anopheles funestus* and *An. arabiensis* in malaria transmission in the Kilombero Valley, Tanzania. Malaria Journal. 2014; 13:331.
18. Kaindoa EW, Matowo NS, Ngowo HS, Mkandawile G, Mmbando A, Finda M *et al.* Interventions that effectively target *Anopheles funestus* mosquitoes could significantly improve control of persistent malaria transmission in south-eastern Tanzania. PLoS ONE. 2017; 12:e0177807.
19. Kaindoa EW, Ngowo HS, Limwagu AJ, Tchouakui M, Hape E, Abbasi S *et al.* Swarms of the malaria vector *Anopheles funestus* in Tanzania. Malaria Journal. 2019; 18:29.
20. Afrane YA, Bonizzoni M, Yan G. Secondary malaria vectors of sub-Saharan Africa: Threat to malaria elimination on the continent. Current Topics in Malaria. In Tech. 2016.
21. Kawada H, Dida GO, Sonye G, Njenga SM, Mwandawiro C, Minakawa N. Reconsideration of *Anopheles rivolurum* as a vector of *Plasmodium falciparum* in western Kenya: some evidence from biting time, blood preference, sporozoite positive rate, and pyrethroid resistance. Parasites & Vectors. 2012; 5:230.
22. Rumisha SF, Shayo EH, Mboera LEG. Spatio-temporal prevalence of malaria and anaemia about agroecosystems in Mvomero district, Tanzania. Malaria Journal. 2019; 18:228.
23. Coluzzi M. Heterogeneities of the malaria vectorial system in tropical Africa and their significance in malaria epidemiology and control. Bulletin WHO. 1984; 62:107-113.

24. Kibret S, Alemu Y, Boelee E, Tekie H, Alemu D, Petros B. The impact of a small-scale irrigation scheme on malaria transmission in Ziway area, Central Ethiopia. *Tropical Medicine and International Health*. 2009; 15:41–50.
25. Diuk-Wasser MA, Touré MB, Dolo G, Bagayoko M, Sogoba N, Sissoko I, Traoré SF, Taylor CE. Effect of rice cultivation patterns on malaria vector abundance in rice-growing villages in Mali. *American Journal of Tropical Medicine and Hygiene*. 2007; 76:869-874.
26. Mboera L, Shayo E, Senkoro K, Rumisha S, Mlozi MR, Mayala BK. Knowledge, perceptions and practices of farming communities on linkages between malaria and agriculture in Mvomero district, Tanzania. *Acta Tropica*. 2010; 113:139-144.
27. Kweka EJ, Mahande AM, Nkya WMM, Assenga C, Lyatuu EE, Nyale E *et al.* Vector species composition and malaria infectivity rates in Mkuzi, Muheza District, North-eastern Tanzania. *Tanzania Journal of Health Research*. 2008; 10:46-49.
28. Aikambe JN, Mnyone LL. Retrospective analysis of malaria cases in a potentially high endemic area of Morogoro Rural district, eastern Tanzania. *Research and Reports in Tropical Medicine*. 2020; 11:37-44.
29. National Bureau of Statistics (NBS): The 2012 Population and Housing Census, Population Distribution by Age and Sex (Volume II), Dar es Salaam, Tanzania, 2013.
30. Gillies TM, Coetzee M. Supplement of the Anopheline of Africa South of Sahara (Afro-tropical Region), Johannesburg, Republic of South Africa: Publication of The South Africa Institute of Medical Research, 1987.
31. Winskill P, Rowland M, Mtove G, Malima RC, Kirby MJ. Malaria risk factors in north-east Tanzania. *Malaria Journal* 2011; 20:10:98.
32. Tesfaye K, Yohannes M, Bayisa S. Trend analysis of malaria prevalence in Raya Azebo district, Northern Ethiopia: a retrospective study. *BMC Research Notes*. 2018; 11:900.
33. Brooker S, Clarke S, Njagi JK, Polack S, Mugo B, Estambale B *et al.* Spatial clustering of malaria and associated risk factors during an epidemic in a highland area of western Kenya. *Tropical Medicine and International Health*. 2004; 9:757-766.
34. Ernst KC, Adoka SO, Kowuor DO, Wilson ML, John CC. Malaria hotspot areas in a highland Kenya site are consistent in epidemic and non-epidemic years and are associated with ecological factors. *Malaria Journal*. 2006; 5:78.
35. Gaudart J, Poudiougou B, Dicko A, Ranque S, Toure O, Sagara I *et al.* Space-time clustering of childhood malaria at the household level: a dynamic cohort in a Mali village. *BMC Public Health*. 2006; 6:286.
36. Hay SI, Snow RW. The malaria Atlas Project: developing global maps of malaria risk. *PLoS Medicine*. 2006; 3:e473.
37. Sinka ME, Bangs MJ, Manguin S, Coetzee M, Mbogo CM, Hemingway J *et al.* The dominant Anopheles vectors of human malaria in Africa, Europe and the Middle East: occurrence data, distribution maps and bionomic précis. *Parasites & Vectors*. 2010; 3:1.
38. Sinka ME. Global distribution of the dominant vector species of malaria. *Anopheles* mosquitoes—new insights into malaria vectors. *Rijeka: In Tech*. 2013; 36.
39. Githeko AK, Adungo NI, Karanja DM, Hawley WA, Vulule JM, Seroney IK *et al.* Some Observations on the Biting Behavior of *Anopheles gambiae* ss, *Anopheles arabiensis*, and *Anopheles funestus* and Their Implications for Malaria Control. *Experimental Parasitology*. 1996; 82:30-315.
40. Antonio-Nkondjio C, Awono-Ambene P, Toto J-C, Meunier J-Y, Zebaze-Kemleu S, Nyambam R *et al.* High malaria transmission intensity in a village close to Yaounde, the capital city of Cameroon. *Journal of Medical Entomology*. 2002; 39:350-355.
41. Awolola T, Ibrahim K, Okorie T, Koekemoer L, Hunt R, Coetzee M. Species composition and biting activities of anthropophilic *Anopheles* mosquitoes and their role in malaria transmission in a holoendemic area of southwestern Nigeria. *African Entomology*. 2003; 11:227-232.
42. Mwangangi JM, Mbogo CM, Nzovu JG, Githure JI, Yan G, Beier JC. Blood-meal analysis for anopheline mosquitoes sampled along the Kenyan coast. *Journal of American Mosquito Control*. 2003; 19:371-375.
43. Wanji S, Tanke T, Atanga SN, Ajonina C, Nicholas T, Fontenille D. *Anopheles* species of the mount Cameroon region: biting habits, feeding behaviour and entomological inoculation rates. *Tropical Medicine and International Health*. 2003; 8:643-649.
44. Scott TW, Takken W. Feeding strategies of anthropophilic mosquitoes result in an increased risk of pathogen transmission. *Trends in Parasitology*. 2012; 28:114-121.
45. Takken W, Knols BG. Odour-mediated behaviour of Afrotropical malaria mosquitoes. *Annual Review of Entomology*. 1999; 44:131-157.
46. Cano J, Berzosa P, Roche J, Rubio J, Moyano E, Guerra-Neira A *et al.* Malaria vectors in the Bioko Island (Equatorial Guinea): estimation of vector dynamics and transmission intensities. *Journal of Medical Entomology*. 2004; 41:158-161.
47. Takken W, Verhulst NO. Host preferences of blood-feeding mosquitoes. *Annual Review of Entomology*. 2013; 58:433-453.
48. Ameneshewa B, Service MW. Resting habits of *Anopheles arabiensis* in the Awash River Valley of Ethiopia. *Annals of Tropical Medicine and Parasitology*. 1996; 90:515-521.
49. Antonio-Nkondjio C, Kerah CH, Simard F, Awono-Ambene P, Chouaibou M, Tchuinkam T *et al.* Complexity of the malaria vectorial system in Cameroon: contribution of secondary vectors to malaria transmission. *Journal of Medical Entomology*. 2006; 43:1215–1221.
50. Taye A, Hadis M, Adugna N, Tilahun D, Wirtz RA. Biting behaviour and *Plasmodium* infection rates of *Anopheles arabiensis* from Sille, Ethiopia. *Acta Tropica*. 2006; 97:50-54.
51. Fornadel CM, Norris LC, Glass GE, Norris DE. Analysis of *Anopheles arabiensis* Blood Feeding Behavior in Southern Zambia during the Two Years after Introduction of Insecticide-Treated Bed Nets. *American Journal of Tropical Medicine and Hygiene*. 2010; 83:848-853.
52. Port GR, Boreham PFL, Bryan JH. The relationship of host size to feeding by mosquitoes of the *Anopheles gambiae* Giles complex (Diptera: Culicidae). *Bulletin of Entomological Research*. 1980; 70:133-144.

53. Knols BG, Takken W, Charlwood JD, De Jong R. Species-specific attraction of *Anopheles* mosquitoes (Diptera: Culicidae) to different humans in south-east Tanzania. *Proceedings of Experimental and Applied Entomology*. 1995; 6:201-206.
54. Stone W, Gonçalves BP, Bousema T, Drakeley C. Assessing the infectious reservoir of falciparum malaria: past and future. *Trends of Parasitology*. 2015; 31:287–296.
55. Yakob L. How do biting disease vectors behaviourally respond to host availability? *Parasites & Vectors*. 2016; 9:468.
56. Takken W. Do insecticide-treated bednets affect malaria vectors? *Tropical Medicine and International Health*. 2002; 7:1022–1030.
57. Lindblade KA, Gimnig JE, Kamau L, Hawley WA, Odhiambo F *et al.* Impact of sustained use of insecticide-treated bednets on malaria vector species distribution and culicine mosquitoes. *Journal of Medical Entomology*. 2006; 43:428-432.
58. Bayoh MN, Mathias DK, Odiere MR, Mutuku FM, Kamau L *et al.* *Anopheles gambiae*: historical population decline associated with regional distribution of insecticide-treated bed nets in western Nyanza Province, Kenya. *Malaria Journal*. 2010, 9.
59. Russell TL, Govella NJ, Azizi S, Drakeley CJ, Kachur SP, Killeen GF. Increased proportions of outdoor feeding among residual malaria vector populations following increased use of insecticide-treated nets in rural Tanzania. *Malaria Journal*. 2011; 10:80.
60. Govella NJ, Ferguson HH. Why the use of interventions targeting outdoor biting mosquitoes will be necessary to achieve malaria elimination. *Frontiers in Physiology*. 2012, 3.
61. Guelbeogo WM, Sagnon NF, Grushko O, Yameogo MA, Boccolini D, Besansky NJ *et al.* Seasonal distribution of *Anopheles funestus* chromosomal forms from Burkina Faso. *Malaria Journal*. 2009; 8:239.
62. Chirebvu E, Moses John Chimbari MJ, Ngwenya BN. Assessment of risk factors associated with malaria transmission in Tubu village, northern Botswana. *Malaria Research and Treatment*. 2014; 2014:10.
63. Tusting LS, Bottomley C, Gibson H, Kleinschmidt I, Tatem AJ, Lindsay SW *et al.* Housing improvements and malaria risk in sub-Saharan Africa: a multi-country analysis of survey data. *PLoS Medicine*. 2017; 14:e1002234.
64. Tusting LS, Ippolito M, Kleinschmidt I, Willey B, Gosling R, Dorsey G *et al.* The evidence for improving housing to reduce malaria: a systematic review and meta-analysis. *Malaria Journal*. 2015; 14:209.
65. Kaindoa EW, Finda M, Kiplagat J. *et al.* Housing gaps, mosquitoes and public viewpoints: a mixed methods assessment of relationships between house characteristics, malaria vector biting risk and community perspectives in rural Tanzania. *Malaria Journal*. 2018; 17:298.
66. Finda MF, Moshi IR, Monroe A, Limwagu AJ, Nyoni AP, Swai JK, *et al.* Linking human behaviours and malaria vector biting risk in south-eastern Tanzania. *PLoS ONE*. 2019; 14:e0217414.
67. Linn SY, Maung TM, Tripathy JP *et al.* Barriers in distribution, ownership and utilization of insecticide-treated mosquito nets among migrant population in Myanmar, 2016: a mixed-methods study. *Malaria Journal*. 2019; 18:172.
68. Than WP, Oo T, Wai KT, Thi A, Owiti P, Kumar B, *et al.* Knowledge, access and utilization of bed-nets among stable and seasonal migrants in an artemisinin resistance containment area of Myanmar. *Infectious Diseases of Poverty*. 2017; 6:138.