



E-ISSN: 2320-7078

P-ISSN: 2349-6800

www.entomoljournal.com

JEZS 2020; 8(4): 1021-1026

© 2020 JEZS

Received: 23-05-2020

Accepted: 25-06-2020

Sakthikarthikeyan S

Department of Veterinary
Pharmacology and Toxicology,
Govind Ballabh Pant University
of Agriculture and Technology
College of Veterinary and Animal
Sciences, Pantnagar,
Uttarakhand, India

Ahmad AH

Department of Veterinary
Pharmacology and Toxicology,
Govind Ballabh Pant University
of Agriculture and Technology
College of Veterinary and Animal
Sciences, Pantnagar,
Uttarakhand, India

Kannan K

Department of Veterinary
Pharmacology and Toxicology,
Govind Ballabh Pant University
of Agriculture and Technology
College of Veterinary and Animal
Sciences, Pantnagar,
Uttarakhand, India

Corresponding Author:**Sakthikarthikeyan S**

Department of Veterinary
Pharmacology and Toxicology,
Govind Ballabh Pant University
of Agriculture and Technology
College of Veterinary and Animal
Sciences, Pantnagar,
Uttarakhand, India

Disposition kinetics of ivermectin (Ivomec super®) following single dose subcutaneous administration in sheep

Sakthikarthikeyan S, Ahmad AH and Kannan K

Abstract

The present study was undertaken to evaluate the pharmacokinetics of Ivermectin (Ivomec super®) 0.2 mg/kg b.wt in Sheep. The study was conducted in four adult, indigenous male muzzafarnagari sheep (1.5- 2.5 yrs in age, weighing 23±2 kg). The plasma concentration of ivermectin was determined by HPLC. The decay in plasma concentration of drug was biexponential in sheep. The C_{max} value of 17.68 ng/ml was obtained at T_{max} of 3.3 days in sheep, following SC administration of Ivomec super®. The elimination half life (β_{HL}), volume of distribution ($V1_F$) and AUC were calculated as 6.84 days, 4.174 L.kg⁻¹, 163.2 day.ng/mL in sheep, following SC administration of Ivomec super®. A dosage regimen of 0.2 mg/kg at 7 days interval is recommended in sheep.

Keywords: Sheep, Ivermectin, Pharmacokinetics, Subcutaneous

Introduction

Ivermectin was the world's first endectocide, forerunner of a completely new class of antiparasitic agents, potently active against a wide range of internal and external nematodes and arthropods. It is a semisynthetic derivative of avermectin B1 and consists of an 80:20 mixture of the equipotent homologous 22, 23 dehydro B1a and B1b. Macrolide endectocides have revolutionized chemotherapy, made an effective contribution to agriculture [37, 36] and benefited both animals and humans. Anthelmintic drugs such as the Benzimidazoles, Levamisole, Pyrantel and Morantel had changed management strategies for optimizing nematode control in livestock and companion-animal veterinary practice since the 1960s. The introduction of Ivermectin in 1981 elevated worm control to new levels.

Ivermectin was first marketed in 1981 by Merck Sharp and Dohme as an antiparasitic agent [34], and it remains the leading worldwide antiparasitic agent for livestock.

It has exceptional potency against endo- and ectoparasites at extremely low doses (doses recommended are expressed as µg/kg); this accounts for its large margin of safety. Toxicity to ivermectin is rare across animal species. The signs of toxicosis are mydriasis and depression, followed by ataxia, recumbency, and death. It has no adverse effects on breeding performance. Many rumino-reticular delivery systems, as well as oral, topical, and injectable formulations of ivermectin, are currently available at the dosage recommended by manufacturers, namely, 200 µg/kg in ruminants (500 µg/kg for topical application) and equines, 300 µg/kg in pigs, and 6 µg/kg in dogs. Its use has revolutionized the treatment of nematode and arthropod parasites in animals and has provided hope for the control or even eradication of filariases in humans [3]. All important gastrointestinal and lung nematodes are susceptible to the drug, including sensitive mites [5], ticks [27], biting flies, and parasitic dipteran larvae [35].

The pharmacokinetic parameters of Ivermectin vary extensively and in accordance with many factors that can all influence the drug's plasma concentration. These factors, which include the species, route of administration, vehicle used in the commercial formulation, bodyweight, body condition, physiological status, and amount and type of nutrition, create difficulties when extrapolating data from one species to another and should be considered in clinical practice in order to achieve effective levels that will last as long as possible. The purpose of present study was undertaken to elucidate disposition kinetics and dose regimen of Ivermectin in sheep. The purpose of the present study was to determine the pharmacokinetics and dosage regimen of Ivermectin following single dose subcutaneous (SC) administration.

Materials and Methods

Experimental animals: The present study was conducted in four adult, indigenous male muzzaffarnagari sheep (1.5-2.5 yrs in age, weighing 23±2 kg). Sheep for this study were procured from Department of Livestock production and Management of college of veterinary and animal sciences, Pantnagar. All these animals were housed in animal house of department of Veterinary Pharmacology and Toxicology and kept on pre-experimental period for one month before the commencement of experiment to acclimatize them to new environment. Physical and clinical examination was done before the start of experiment. The animals were reared under uniform management and husbandry conditions, maintained on standard ration and water provided *ad libitum*. The animals were kept under constant observation before the commencement of the experiment.

Ethical approval: Institutional Animal ethics committee principles were followed strictly throughout the course of this study. Animals were handled gently and carefully. Deworming was done one month before the start of experimentation with the help of fenbendazole which was given at the rate 5mg/kg body weight.

Instruments used: HPLC system (Shimadzu Corporation, Kyoto, Japan, Model RF-10A_{XL}, LC10AT) comprised of double plunger pump, Rheodyne injector with 20 µl loop, Fluorescence detector, C₁₈ reverse phase column (Lichrospher 100 RP-18, 5µm (125 mm x 4 mm) with a guard column (Lichrospher 100 RP-18e (5µm), Merck Kga A, 64271 Darmstadt, Germany, Hamilton Syringe, Manufactured by Hamilton (Co., RE No. Nevada, USA) volume 20µl, to load the sample into the injector, Refrigeration Centrifuge machine.

Drugs and Chemicals used: Pure technical standard Ivermectin (Sigma Aldrich Ltd), Methanol (HPLC grade), Acetonitrile (HPLC grade), Water (HPLC grade), Trifluoroacetic anhydride (Avra[®]), 1-methyl imidazole (HIMEDIA[®]), Heparin (Loba Chemie[®]), Acetic acid (HPLC grade)

Estimation of Ivermectin: Injectable formulation of Ivomec super[®] (M/s Merial Saude Animal Ltd.,) was used in the study. Pharmacokinetic study of Ivermectin was conducted following a single dose (0.2 mg kg⁻¹) Subcutaneous (SC) injection in neck region of Sheep. The blood samples were collected from jugular vein of calves in heparinized microcentrifuge tubes by disposable plastic syringes at time interval of 0 min, 15 min, 30 min, 1h, 3 h, 6 h, 12 h, 1 day, 3 day, 6 day, 9 day and up to 42 days. The blood samples collected in heparinized tubes following administration of Ivermectin were centrifuged at 5000 rpm (15 min) for separation of plasma. The plasma thus obtained was collected in micro centrifuge tubes and stored at -20°C till further analysis. An intervening wash out period of one month was given to all the animals before commencement of new experiment.

Extraction and Derivatization of Ivermectin from plasma samples: Extraction of plasma samples was carried out as per the method described by Perez *et al.* (2007) [31] and Na-Bangchang *et al.* (2006) [29] with slight modifications. 1 ml of acetonitrile and 0.25 ml of deionised water was added to 1 ml of plasma sample, vortex mixed for 20-30 seconds and centrifuged at 12,000g for 12 minutes (4°C). The supernatant was transferred to a clean tube and evaporated to dryness under a stream of nitrogen at 30-40°C. The residue was

subjected to derivatization according to the method of De Montigny *et al.* (1990) [13]. The residue was dissolved in 100 µL of 1-methylimidazole solution in acetonitrile (1:2 v/v). To initiate the derivatization, 150 µL of Trifluoroacetic anhydride solution in acetonitrile (1:2 v/v) was added. After completion of the reaction (< 30 s), an aliquot (20 µL) of this solution was injected directly in to HPLC. The isocratic mobile phase consists of acetic acid (0.2% in water), methanol, and acetonitrile (4:32:64, v/v/v). The flow rate was kept at 0.7 ml.min⁻¹ at a temperature of 30°C with fluorescence detection at an excitation wavelength of 365 nm and an emission wavelength of 475 nm. Ivermectin was quantified from its respective retention time.

Preparation of Standard Curve: The standards for Ivermectin were made by dissolving 1 mg of pure Ivermectin in 1 ml of methanol from which concentrations of 100, 50, 25, 10, 5, 1 ng.ml⁻¹ were made in methanol. 20 µl of these concentrations was injected into HPLC system and quantified under the HPLC conditions mentioned above. The standard calibration curve for Ivermectin was obtained by plotting concentrations *versus* mean of the peak areas obtained for their respective standards. The limit of quantification (LOQ) for Ivermectin was 1ng.ml⁻¹. The method for Ivermectin was found to be linear and reproducible in the concentrations ranging 100 to 1 ng.ml⁻¹. A retention time of 24.1 min for Ivermectin was observed. Figure-1

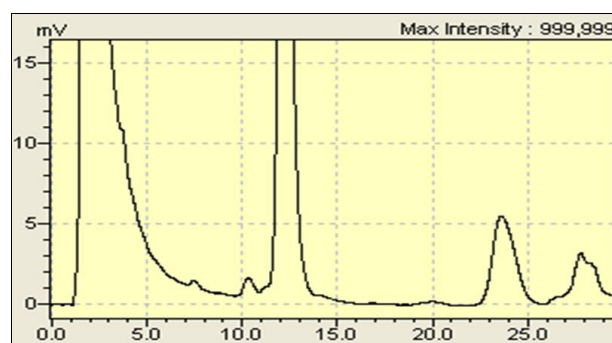


Fig 1: Peak of Ivermectin (retention time = 24.1 minutes) in plasma

The concentrations of the Ivermectin standard were made in drug free plasma as 100, 50, 25, 10, 5, 1 ng.ml⁻¹ applying serial ten times dilution (100 µl standard + 900 µl drug free plasma) of 1000, 500, 250, 100, 50, 10 ng.ml⁻¹ of standard in methanol, in equal volumes of drug free plasma, each time. The extraction from plasma was done by the same procedure as mentioned earlier. The areas obtained by chromatography were plotted against concentration in order to get a standard calibration curve. Recovery of the drug was done by deproteinizing the plasma having above mentioned drug concentration. Recovery percent of Ivermectin from plasma was 83.2.

Pharmacokinetic analysis of data: The plasma concentrations and pharmacokinetic variables of Ivermectin were expressed as mean ± S.E. The pharmacokinetic analysis of the plasma concentration obtained following SC administration of Ivermectin in this study was done by pharmacokinetic software "Phasight WinNonlin" version 5.3.

Results

The plasma concentration-time profile following single dose (0.2 mg.kg⁻¹) subcutaneous administration of Ivermectin (Ivomec super[®]) in sheep is depicted in Figure 2.

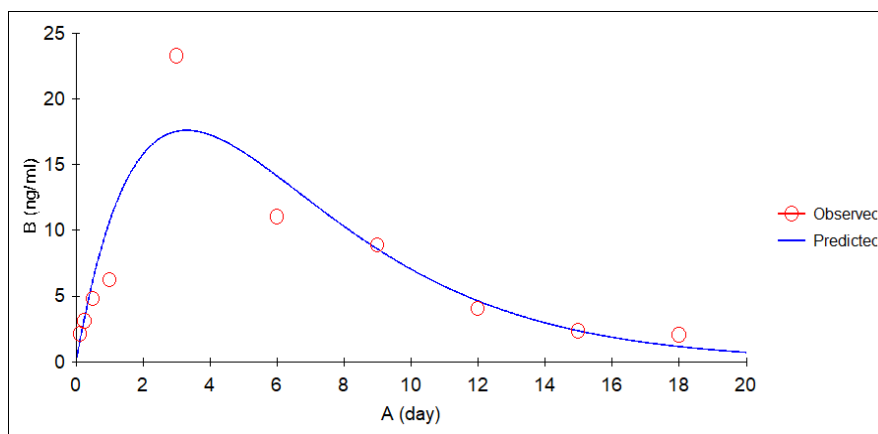


Fig 2: Plasma concentration-time plot of observed concentration (mean) Vs predicted profile of Ivermectin (Ivomec super®) following single dose (0.2 mg.kg⁻¹) subcutaneous administration in sheep (n=4)

The plasma samples were collected up to 42 days. The concentration of Ivermectin could be detected only up to 18 days. The mean peak plasma concentration was 17.685±0.3 ng.ml⁻¹ which attained at 3.3 day post administration which decreased slowly to a minimum of 2.124±0.03 ng.ml⁻¹ at 18th

day. The pharmacokinetic parameters describing the disposition kinetics of Ivermectin (Ivomec super®) following single dose (0.2 mg.kg⁻¹) subcutaneous administration are presented in Table 1.

Table 1: Pharmacokinetic parameters of Ivermectin (Ivomec super®) in plasma following single dose (0.2 mg.kg⁻¹) SC administration in sheep (n=4)

Parameters	Units	Sheep Number				Mean ±SE
		I	II	III	IV	
V1_F	ml/kg	4316.005	4155.364	4290.535	3934.536	4174.11±87.2
K01	1/day	0.289	0.300	0.299	0.301	0.297±0.002
K10	1/day	0.273	0.304	0.295	0.303	0.293±0.007
K12	1/day	0.007	0.001	0.008	0.001	0.004±0.001
K21	1/day	0.075	0.137	0.132	0.093	0.109±0.015
AUC	day.ng/ml	169.615	158.105	157.835	167.561	163.279±3.09
K01_HL	Day	2.394	2.310	2.316	2.302	2.330±0.021
K10_HL	Day	2.537	2.276	2.346	2.284	2.360±0.06
Alpha	1/day	0.283	0.304	0.295	0.305	0.296±0.005
Beta	1/day	0.0723	0.137	0.132	0.092	0.108±0.015
Alpha_HL	Day	2.442	2.274	2.345	2.266	2.331±0.04
Beta_HL	Day	9.585	5.052	5.234	7.489	6.84±1.06
A	ng/ml	2311.152	3089.242	3676.603	3216.087	3073.2±283.64
B	ng/ml	0.814	0.063	0.036	0.258	0.292±0.18
CL_F	ml/day/kg	1179.135	1264.978	1267.140	1193.588	1226.21±23.19
V2_F	ml/kg	445.114	4.415	2.837	72.101	131.116±105.9
CLD2_F	ml/day/kg	33.426	0.606	0.37	6.72	10.280±7.85
Tmax	Day	3.517	3.308	3.363	3.302	3.372±0.05
Cmax	ng/ml	17.327	17.573	17.260	18.583	17.685±0.3

Pharmacokinetic Parameters: Symbols & Units

V1_F	L.Kg-1	Volume of distribution of central compartment when fraction of drug absorption is not known
K01	day-1	Rate constant of absorption phase
K10	day-1	Elimination rate constant of first phase
K12	day-1	Transfer rate constant from central to peripheral compartment
K21	day-1	Transfer rate constant from peripheral to central compartment
AUC	ng.day.ml-1	Total area under the curve (from time zero to infinity)
K01_HL	Day	Absorption half life
K10_HL	Day	Elimination half life of first phase
α	day-1	First order rate constant; Regression coefficient for the distribution phase of the disposition curve
β	day-1	Regression coefficient for the elimination phase, it is the terminal slope of the least-squares linear regression line through a plot of the natural logarithm of plasma-serum conc. (lnC) versus time (t)
Alpha_HL	Day	Distribution half-life
Beta_HL	Day	Elimination half-life of second phase
A	ng.ml-1	Zero time intercept of plasma concentration of distribution phase
B	ng.ml-1	Zero-time intercept of plasma concentration of elimination phase
CL_F	L.kg-1.day-1	The clearance from central compartment when fraction of drug absorption is not known
V2_F	L.Kg-1	Volume of distribution of peripheral compartment when fraction of drug absorption is not known
Tmax	Day	Time to reach peak plasma concentration
Cmax	ng.ml-1	Peak plasma concentration

A two-compartment model adequately ($r=0.91$) described the plasma concentration-time profile of Ivomec super® in sheep following single dose subcutaneous administration.

The mean values of zero_time intercept of distribution phase (A) and elimination phase (B) in the present study were calculated to be 3073.2 ± 283.64 ng.mL⁻¹ and 0.292 ± 0.18 ng.mL⁻¹, respectively. The elimination rate constant of first phase (K_{10}) and second phase (β) were 0.293 ± 0.007 and 0.108 ± 0.015 day⁻¹, respectively, with an elimination half-life of first phase (K_{10_HL}) and second phase (β_{HL}) calculated as 2.360 ± 0.06 and 6.84 ± 1.06 day, respectively. The transfer rate constant from central to peripheral compartment (K_{12}) and from peripheral to central compartment (K_{21}) were 0.004 ± 0.001 and 0.109 ± 0.015 day⁻¹, respectively. The volume of distribution of central compartment (V_{1_F} ; when fraction of drug absorption is not known), and volume of distribution of peripheral compartment (V_{2_F} ; when fraction of drug absorption is not known) were 4174.11 ± 87.2 and 131.11 ± 105.9 ml.kg⁻¹ respectively. The clearance from central compartment (CL_F ; when fraction of drug absorption is not known) and clearance from peripheral compartment ($CLD2_F$; when fraction of drug absorption is not known) were estimated as 1226.21 ± 23.19 and 10.28 ± 7.85 ml.kg⁻¹.day⁻¹ respectively. The rate constant of distribution phase (α) was 0.296 ± 0.005 day⁻¹ with distribution half-life (α_{HL}) of 2.33 ± 0.04 day. The rate constant of absorption phase (K_{01}) was 0.297 ± 0.002 day⁻¹ with absorption half-life (K_{01_HL}) of 2.33 ± 0.021 day. The mean area under curve (AUC) was 163.279 ± 3.09 ng.mL⁻¹ day.

Discussion

A two-compartment model adequately described the plasma concentration-time profile of Ivomec super® sheep following single dose (0.2 mg.kg⁻¹) SC administration in the present study. The values of C_{max} in the present study were 17.68 ng.mL⁻¹ in sheep following SC administration of Ivomec super®. These findings could be well corroborated with C_{max} in sheep 16.3 ng/mL [4]. The higher peak plasma C_{max} level compared to present study has been reported in cattle (42.8 , 46.4 and 40 ng/mL; [22, 23, 25] respectively), sheep (41.2 and 30 ng/mL; [14 & 28] respectively), pigs (39.6 ; [23]), horses (51.3 ng/mL; [30]) and dogs (44.3 ng/mL; [22]). However, lower peak plasma C_{max} level compared to present study has been reported in sheep as (12.2 , 16 and 11.9 ng/mL; [19, 21, 9], respectively), goats (9.3 and 6.1 ng/mL; [16, 1], respectively).

The lower plasma levels in sheep in the present study may be due to a wider distribution rather than to faster elimination. Injectable product has the advantage that higher maximum plasma concentration are achieved and, thus presumably (by gradient diffusion) greater skin penetration and ectoparasiticidal activity, whereas the oral product is more easily administered and may have greater activity against some intestinal nematodes.

The value of T_{max} in the present study was 3.3 days in sheep following SC administration of Ivomec super®. These findings could be well corroborated with T_{max} (3.4 days) in cattle [17] and goats (3 days; [20]).

A lower level of T_{max} (2.25 days) compared to present study has been reported in cattle [24], sheep (1.7 and 1.24 days; [8, 6], respectively). However, higher level of T_{max} (15 days) has been reported in cattle [20]. The difference in the value of T_{max} in the present study could be due to the species variation.

The mean elimination half-lives in the present study was 6.84

days in sheep following SC route of administration of Ivomec super®. These findings of mean elimination half -lives could be corroborated with (7.4 days) in goats [20].

The higher mean elimination half-lives compared to present study has been reported (17.2 days) in cattle [22], in sheep (9.6 days; [19]). However, lower mean elimination half-lives compared to present study has been reported (1.18 days) in pigs [10].

Volume of distribution is a measure of extravascular distribution of a drug and higher values would always be advantageous for therapeutic purposes indicating excellent tissue penetration. In the present study, the volume of distribution (V_{1_F}) was 4.174 L.kg⁻¹ in sheep following SC administration of Ivomec super®. These findings could be well corroborated with volume of distribution (4.6 L.kg⁻¹) in sheep [26]. Distribution in the sheep is faster and wider than in cattle or dogs [26] due to substantial deposition into adipose tissue, which may act as a drug depot [32]. The larger fat reservoir in sheep compared to cattle could contribute not only to the more extensive distribution but also the greater persistence in plasma at lower concentrations, probably because less blood is supplied to fatty tissues [4].

A lower volume of distribution (1.2 L.kg⁻¹) compared to present study has been reported in cattle [15], goats (2.8 L.kg⁻¹; [20], pigs (2.7 L.kg⁻¹; [10]) and sheep (3 L.kg⁻¹; [19]). However, higher volume of distribution compared to present study has been reported (8.8 L.kg⁻¹) in sheep [14], and goats (12.8 L.kg⁻¹, [21]).

The AUC is the parameter that integrates both time and intensity of drug concentration. The area under the concentration time curve characterizes the relative availability of drug in the body [35]. The area under curve (AUC) in the present study was 163.2 ng.mL⁻¹day in sheep following SC administration of Ivomec super® respectively. The findings of the present study could be compared with that reported (153 ng.mL⁻¹day) in goats [25], pigs (165 ng.mL⁻¹day; [23]) and cattle (149 ng.mL⁻¹day; [26]).

However, higher area under curve (AUC) compared to present study has been reported in cattle (459 , 595.1 and 328.8 ng.mL⁻¹ day; [22, 21, 15], respectively), horses (550.4 ng.mL⁻¹ day; [27]), sheep ($197,175$ and 207.5 ng.mL⁻¹day; [19, 22, 14], respectively). The lower area under curve (AUC) compared to present study has been reported (121.5 ng.mL⁻¹day) in cattle [19], sheep (64 , 82.1 and 74.6 ng.mL⁻¹day; [9, 6, 28] respectively), goats (60 and 34.4 ng.mL⁻¹day; [1, 16], respectively), pigs (71.41 and 85.7 ng.mL⁻¹day; [33, 11], respectively) horses (137.1 ng.mL⁻¹day, [19]), donkeys (119.3 ng.mL⁻¹day; [18]) and dogs (4.5 ng.mL⁻¹day; [22]).

Plasma clearance of drug is the volume of the blood or plasma cleared of drug by metabolism and excretion per unit of time. It is a better index of efficiency of drug elimination than half-life as it gives the clearance of drug from blood per unit of time [5]. The values of clearance in this study were 1.22 L.kg⁻¹.day⁻¹ in sheep following SC administration of Ivomec super®. The findings of the present study could be compared with that plasma clearance observed (1.11 L.kg⁻¹.day⁻¹) in sheep [19] and goats (1.56 L.kg⁻¹.day⁻¹; [20]).

The higher plasma clearance compared to present study has been reported (3.24 L.kg⁻¹.day⁻¹ in sheep [8]), and pigs (4.15 L.kg⁻¹.day⁻¹, [10]).

However, lower plasma clearance compared to present study has been reported in cattle (0.27 , 0.35 and 0.48 L.kg⁻¹.day⁻¹; [21, 7, 22], respectively) and sheep (0.56 L.kg⁻¹.day⁻¹; [32])

Ivermectin persists in the body for a prolonged period, not

only due to low plasma clearance but also due to the accumulation in fat tissue. Plasma clearance appears to be greater in pigs than in (goats > sheep > cattle) polygastric species [3].

Conclusion

Based on the above pharmacokinetic study in sheep by subcutaneous route of administration, a dosage regimen of 0.2 mg/kg at 14 and 7 days interval is recommended in sheep

Acknowledgements

The authors are thankful to Department of Veterinary Pharmacology and Toxicology, GBPUAT, College of veterinary and Animal Sciences, Pantnagar, Uttarakhand for providing necessary research facilities.

References

- Alvinerie M, Sutra JF, Galtier P. Ivermectin in goat plasma and milk after subcutaneous injection. *Annales de Recherches Vétérinaires*. 1993; 24:417-421.
- Alvinerie M, Sutra JF, Galtier P, Lifschitz A, Virkel G, Sallovitz J. Persistence of Ivermectin in plasma and faeces following administration of a sustained-release bolus to cattle. *Research in Veterinary Science*. 1998; 66:57-61.
- Arañzazu GC, Ana MSP, Jose DLB, Nelida FM, Matilde SV, Vieitez JG. The pharmacokinetics and metabolism of Ivermectin in domestic animal species. *The Veterinary Journal*. 2009; 179:25-37.
- Atta AH, Abo-Shihada MN. Comparative pharmacokinetics of doramectin and Ivermectin in sheep. *Journal of Veterinary Pharmacology and Therapeutics*. 2000; 23:49-52.
- Baggot, J.D. *Veterinary pharmacology and therapeutics*. Ed. 6th. Boothe, N.H. and Mc. Donald, L.E., The Iowa State Univ. Press, 1988, 36-39.
- Barber S, Bowles V, Lespine A, Alvinerie M. The comparative serum disposition kinetics of subcutaneous administration of doramectin, Ivermectin and moxidectin in the Australian merino sheep. *Journal of Veterinary Pharmacology and Therapeutics*. 2003; 26:343-348.
- Bousquet-Melou A, Mercadier S, Alvinerie M, Toutain PL. Endectocide exchanges between grazing cattle after pour-on administration of doramectin, Ivermectin and moxidectin. *International Journal of Parasitology*. 2004; 34:1299-1307.
- Cerkvenik V, Grabnar I, Skubic V, Doganoc DZ, Beek WM, Keukens HJ, Drobnic M, Pogacnik M. Ivermectin pharmacokinetics in lactating sheep. *Veterinary Parasitology*. 2002; 104:175-185.
- Cerkvenik V, Grabnar I, Skubic V, Doganoc DZ, Beek WM, Keukens HJ. Ivermectin pharmacokinetics in lactating sheep. *Veterinary Parasitology*. 2002; 104:175-185.
- Craven J, Bjørn H, Hennesy D, Friis C, Nansen P. Pharmacokinetics of moxidectin and Ivermectin following intravenous injection in pigs with different body compositions. *Journal of Veterinary Pharmacology and Therapeutics*. 2001; 24:99-104.
- Craven J, Bjørn H, Hennesy DR, Friis C. The effects of body composition on the pharmacokinetics of subcutaneously injected Ivermectin and moxidectin in pigs. *Journal of Veterinary Pharmacology and Therapeutics*. 2002a; 25:227-232.
- Daurio CP, Cheung EN, Jeffcoat AR, Skelly BJ. Bioavailability of Ivermectin administered orally to dogs. *Veterinary Research Communications*. 1992; 16:125-130.
- De montigny P, Shim JSK, Pivinichny JV. Liquid chromatographic determination of Ivermectin in animal plasma with trifluoroacetic anhydride and N-methylimidazole as the derivatization reagent. *Journal of Pharmaceutical and Biomedical Analysis*. 1990; 8:507-511.
- Echeverri'a J, Mestorino N, Errecalde J. Comparative pharmacokinetics of Ivermectin after its subcutaneous administration in healthy sheep and sheep infected with mange. *Journal of Veterinary Pharmacology and Therapeutics*. 2002; 25:159-160.
- Echeverri'a J, Mestorino N, Giorgieri S, Turic E, Alt M, Errecalde J. Pharmacokinetics of Ivermectin after its intravenous and subcutaneous administration to cattle. *Journal of Veterinary Pharmacology and Therapeutics*. 1997; 20:77-78.
- Escudero E, Carceles CM, Galtier P, Alvinerie M. Influence of fasting on the pharmacokinetics of Ivermectin in goats. *Journal of Veterinary Pharmacology and Therapeutics*. 1997; 20:71-72.
- Gayraud V, Alvinerie M, Toutain PL. Comparison of pharmacokinetic profiles of doramectin and Ivermectin pour-on formulations in cattle. *Veterinary Parasitology*, 1999; 81:47-55.
- Gokbulut C, Boyacioglu M, Karademir U. Plasma pharmacokinetics and faecal excretion of Ivermectin (Eqvalan® paste) and doramectin (Dectomax®, 1%) following oral administration in donkeys. *Research in Veterinary Science*. 2005; 79:233-238.
- Gonzalez A, Sahagun A, Diez MJ, Fernandez N, Sierra M, Garcia JJ. Bioavailability of a commercial formulation of Ivermectin after subcutaneous administration to sheep. *American Journal of Veterinary Research*. 2007; 68:101-106.
- Gonzalez A, Sahagun AM, Diez MJ, Fernandez N, Sierra M, Garcia JJ. Pharmacokinetics of a novel formulation of Ivermectin after administration to goats. *American Journal of Veterinary Research*. 2006; 67:323-328.
- Laffont CM, Alvinerie M, Bousquet-Melou A, Toutain PL. Licking behaviour and environmental contamination arising from pour-on Ivermectin for cattle. *International Journal of Parasitology*. 2001; 3:1687-1692.
- Lanusse C, Lifschitz A, Virkel G, Alvarez L, Sanchez S, Sutra JF, Galtier P, Alvinerie M. Comparative plasma disposition kinetics of ivermectin, moxidectin and doramectin in cattle. *Journal of Veterinary Pharmacology and Therapeutics*. 1997; 20:91-99.
- Lifschitz A, Pis A, Alvarez L, Virkel G, Sanchez S, Sallovitz J. Bioequivalence of Ivermectin formulations in pigs and cattle. *Journal of Veterinary Pharmacology and Therapeutics*. 1999a; 22:27-34.
- Lifschitz A, Virkel G, Pis A, Imperiale F, Sanchez S, Alvarez L. Ivermectin disposition kinetics after subcutaneous and intramuscular administration of an oil-based formulation to cattle. *Veterinary Parasitology*. 1999b; 86:203-215.
- Lifschitz A, Virkel G, Sallovitz J, Sutra JF, Galtier P, Alvinerie M. Comparative distribution of Ivermectin and doramectin to tissues of parasite location in cattle. *Vet. Parasitol*. 2000; 87:327-338.

26. Lo P, Fink D, Williams J, Blodinger J. Pharmacokinetics studies of ivermectin: effect of formulation. *Vet. Res. Commun.* 1985; 9:251-268.
27. Marriner SE, McKinnon I, Bogan JA. The pharmacokinetics of Ivermectin after oral and subcutaneous administration to sheep and horses. *Journal of Veterinary Pharmacology and Therapeutics.* 1987; 10:175-179.
28. McKellar QA, Jackson F, Coop RL, Jackson E, Scott E. Effect of parasitism with *Nematodirus battus* on the pharmacokinetics of levamisole, ivermectin, and netobimin. *Veterinary Parasitology.* 1991; 39:123-136.
29. Na-Bangchang K, Banmairuroi V, Choemung A. High performance liquid chromatographic method for the determination of Ivermectin of Ivermectin in plasma. *Southeast Asian J Trop. Med. Public. Health.* 2006; 37(5):848-858
30. Perez R, Cabezas I, Godoy C, Rubilar L, Muñoz L, Arboix M. Pharmacokinetics of doramectin and Ivermectin after oral administration in horses. *The Veterinary Journal.* 2002; 163:161-167.
31. Perez R, Palma C, Nunez MJ, Cox J, Arboix M. Pharmacokinetics of Ivermectin in pregnant and nonpregnant sheep. *J vet. Pharmacol. Therap.* 2007; 31:71-76.
32. Prichard RK, Steel JW, Lacey E, Hennessy DR. Pharmacokinetics of Ivermectin in sheep following intravenous, intra-abomasal or intraruminal administration. *Journal of Veterinary Pharmacology and Therapeutics.* 1985; 8:88-94.
33. Scott EW, McKellar QA. The distribution and some pharmacokinetic parameters of Ivermectin in pigs. *Veterinary Research Communications,* 1992; 16:139-146.
34. Steel JW. Pharmacokinetics and metabolism of avermectins in livestock. *Veterinary Parasitology.* 1993; 48:45-47.
35. Timothy GG. Ivermectin 20 years on: maturation of a wonder drug. *Trends in parasitology.* 2005; 21:11-12.
36. Walsh TA, Younis PJ, Morton JM. The effect of Ivermectin treatment of late pregnant dairy cows in south-west Victoria on subsequent milk production and reproductive performance. *Aust. Vet. J.* 1995; 72:201-207.
37. Windsor RS, Windsor RHS, Teran M. Economic benefits of controlling internal and external parasites in south American camelids. *Ann. NY. Acad. Sci.* 1992; 653:398-405.